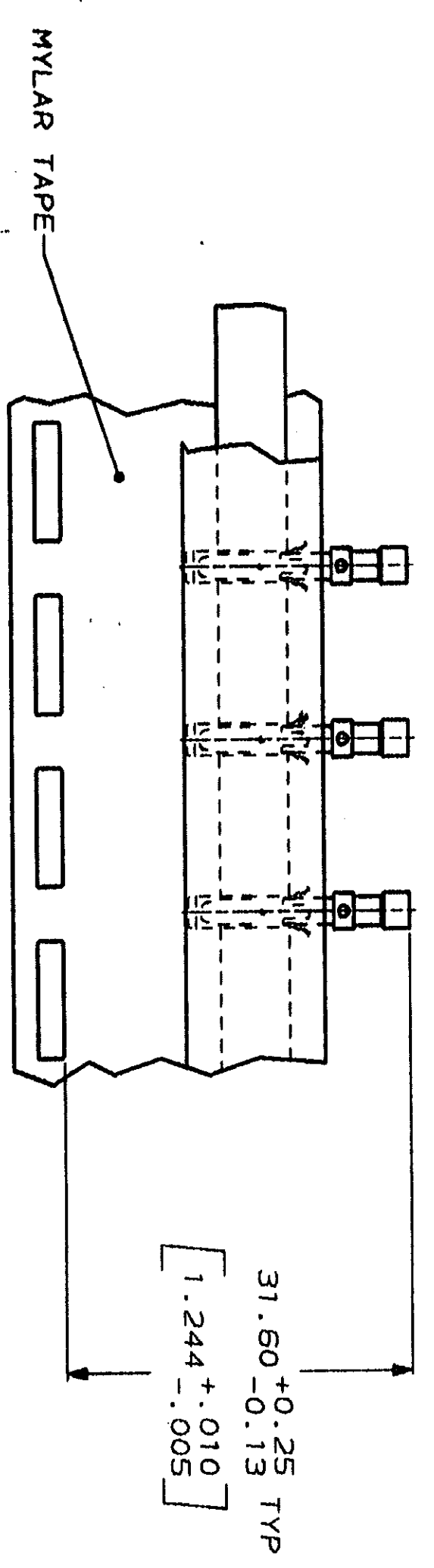
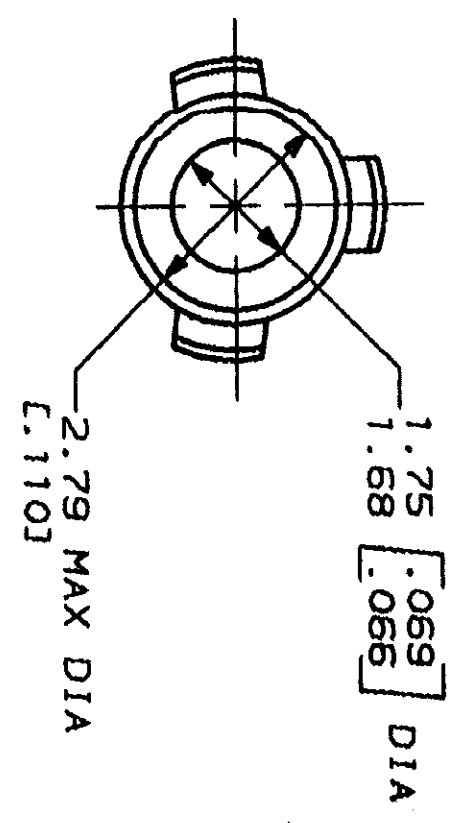
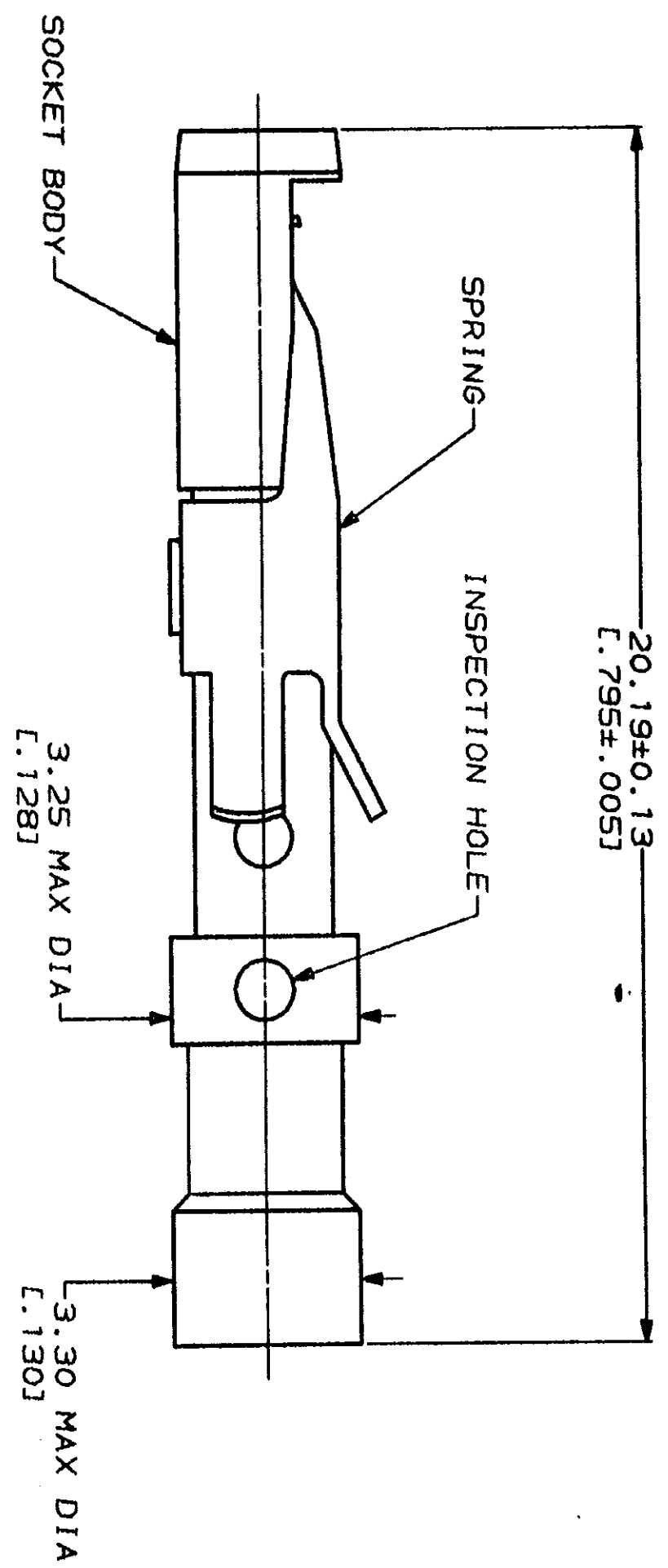
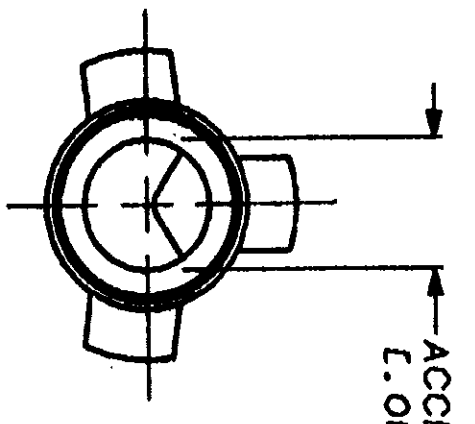


REV	DATE	DESCRIPTION	BY	APP
4	BD	39		
ADDED -3 PER NFR 4680 AND REMAIN ON CAD				



TAPE MTG DETAIL
 SCALE 2:1

1. 0.76µm [L.000030] MIN GOLD OVER 1.27µm [L.000050] MIN NICKEL.
 2. PLATING THICKNESS TO BE MEASURED ON SURFACES ACCESSIBLE WITH 0.64 [L.025] DIA SPHERE.
- WHEN ORDERING CONTACT ASSEMBLY ON TAPE, ORDER BY THE TAPE NUMBER PLUS THE PACKAGING CODE AS FOLLOWS:
1. FOR USE WITH AMP TAPETRONIC, PNEUMATIC TOOL-
 - A. 1000 PARTS TO A BOX ADD PACKAGING CODE: 1MBOX
 2. FOR USE WITH 4/8 INDENT STRIPPER CRIMPER-
 - A. 1000 PARTS TO A REEL ADD PACKAGING CODE: 1MREEL
 - B. 5000 PARTS TO A REEL ADD PACKAGING CODE: 5MREEL

DO NOT SCALE PRINT. UNLESS SPECIFIED DIMENSIONS IN mm [INCHES] TOLERANCES ON:	DR 04/07/93 D. BELTZ	SIZE	CAGE CODE	DRAWING NO
2 PLC DEC ± -	CRK 4-25-93 R. STONE	SCALE	00779	202508
3 ANGLES ± -	APPD 4-29-93 R. S. KLINE	APPLIC		
MATERIAL	APPD -	FINISH		
SOCKET BODY, COPPER ALLOY	PRODUCT SPEC	SOCKET BODY, Δ		
SPRING, STAINLESS STEEL	APPLICATION SPEC	WEIGHT		

SMALL PACK	202508-3
TAPE MTG (SEE DETAIL) Δ	202508-2
STANDARD	202508-1
PACKAGING TYPE	PART NO

AMP
 AMP Incorporated
 Harrisburg, PA 17105-3608

CONTACT ASSEMBLY, SOCKET,
 #16, 16-18 AWG, TYPE II